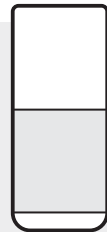


Thank You for Purchasing CONFERENCE SPEAKER

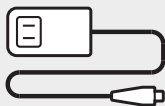
TCS100KU-ML

User Manual

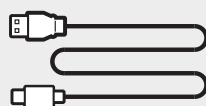
What's in the Box



Conference Speaker S100



Power Adapter

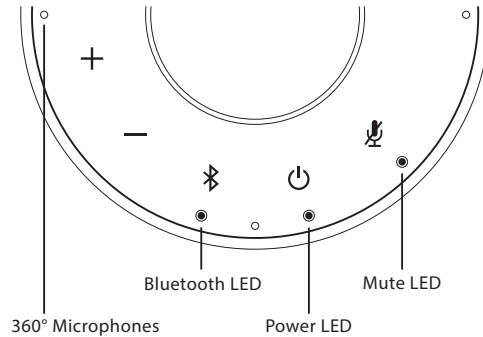


USB Cable

Warranty Card

User Manual

Getting to know your Conference Speaker S100



+ Volume up Tap to increase volume
- Volume down Tap to reduce volume

Bluetooth
Connect with new Bluetooth device
 Press and hold to enter Bluetooth pairing mode to connect with a new Bluetooth device
Disconnect or reconnect with Bluetooth device
 Tap to disconnect or reconnect with a paired Bluetooth device

○ Off	Bluetooth off
● Purple	Not connected to any Bluetooth device
● Blue	Connected to at least one Bluetooth device
✳ Flashing Blue	Speaker is in Bluetooth pairing mode

Power On/Off
 Press and hold to turn S100 on/off

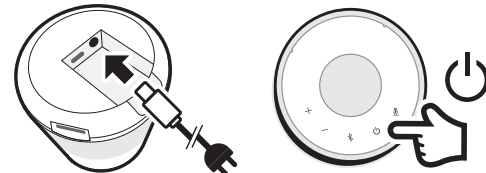
Mute
Mute microphone
 Tap to mute or unmute microphone

Voice guidance
 Press and hold 10s to turn voice guidance on/off

Getting Started

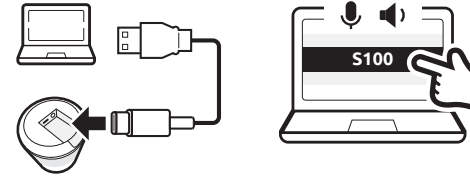
1 Turn on the S100

- Plug the included power adapter into a power outlet and connect the other end to S100.
- Press and hold [] on the top of the speaker for 2 seconds to turn S100A on and 3 seconds to turn it off.



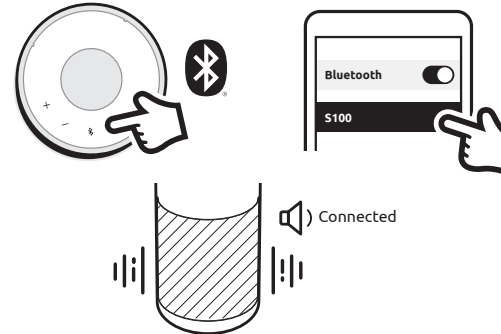
2 Connect S100 to your computer

- Plug the included USB cable into your computer and connect the end with the type-C connector to the S100.
- Select S100 as the default microphone and speaker source.



3 Connect S100 with a Bluetooth Device

- Press and hold [] for 3 seconds until the Bluetooth LED on S100 begins flashing. You will hear connection guidance voice prompts.
- Enable Bluetooth on your Bluetooth device.
- Select S100 from the list of available Bluetooth devices to connect.
- You will hear the S100 say "Connected".
- Tap [] to disconnect with connecting Bluetooth device.



4 Mute/Unmute

- Tap [] while calling to mute or unmute the microphone.

FCC Statement

Warning: Changes or modifications to this unit not expressly approved by the party responsible for compliance could void the user's authority to operate the equipment.

NOTE: This equipment has been tested and found to comply with the limits for a Class B digital device, pursuant to Part 15 of the FCC Rules. These limits are designed to provide reasonable protection against harmful interference in a residential installation. This equipment generates, uses and can radiate radio frequency energy and, if not installed and used in accordance with the instructions, may cause harmful interference to radio communications.

However, there is no guarantee that interference will not occur in a particular installation. If this equipment does cause harmful interference to radio or television reception, which can be determined by turning the equipment off and on, the user is encouraged to try to correct the interference by one or more of the following measures:

- Reorient or relocate the receiving antenna.
- Increase the separation between the equipment and receiver.
- Connect the equipment into an outlet on a circuit different from that to which the receiver is connected.
- Consult the dealer or an experienced radio/TV technician for help.

This device complies with Part 15 of the FCC Rules. Operation is subject to the following two conditions:

- (1) This device may not cause harmful interference.
- (2) This device must accept any interference received, including interference that may cause undesired operation.

ISED Regulatory Compliance

This device contains license-exempt transmitter(s)/receiver(s) that comply with Innovation, Science and Economic Development Canada's license-exempt RSS(s). Operation is subject to the following two conditions:

1. This device may not cause interference.
2. This device must accept any interference, including interference that may cause undesired operation of the device.

L'émetteur/récepteur exempt de licence contenu dans le présent appareil est conforme aux CNR d'Innovation, Sciences et Développement économique Canada applicables aux appareils radio exempts de licence. L'exploitation est autorisée aux deux conditions suivantes :

1. L'appareil ne doit pas produire de brouillage;
2. L'appareil doit accepter tout brouillage radioélectrique subi, même si le brouillage est susceptible d'en compromettre le fonctionnement.

RF Exposure Compliance

This equipment complies with FCC/IC radiation exposure limits set forth for an uncontrolled environment.

This equipment should be installed and operated with minimum distance 20cm between the radiator and your body.

Cet équipement est conforme aux limites d'exposition aux radiations FCC/IC établies pour un environnement non contrôlé.

Cet équipement doit être installé et utilisé avec une distance minimale de 20 cm entre le radiateur et votre corps.

EU Compliance

VuPoint (Europe) Company Limited confirms that this product meets market requirements.

Full declaration text available at:

www.toucansolution.co.uk/pages/certificats



Manufacturer:
VuPoint Solutions, Inc. (USA):
 710 Nogales Street, City of Industry, CA 91748, US

VuPoint (Europe) Company Limited:
 1 Devon Way, Longbridge Technology Park,
 Longbridge, Birmingham B31 2TS, UK

EU Authorised Representative:
CERTLabel UG (haftungsbeschränkt)
 Wicherstraße 16/17, 10439 Berlin, DEUTSCHLAND

For additional info, visit our website at www.toucansolution.co.uk

©2022 VUPOINT SOLUTIONS, INC. All Rights Reserved.
 The Toucan logo and Toucan are trademarks or registered trademarks of VuPoint Solutions Inc. in the United States and other countries. The Bluetooth® word mark and logos are registered trademarks owned by Bluetooth SIG, Inc. Product names, logos, brands and other trademarks referred to herein are the property of their respective trademark holders. All trademarks remain the property of their respective holders, and are used only to describe the products or services being provided. These trademark holders are not affiliated with VuPoint Solutions, Inc. They do not sponsor or endorse VuPoint Solutions, Inc's products or services.

S100

UK CA FC

CE